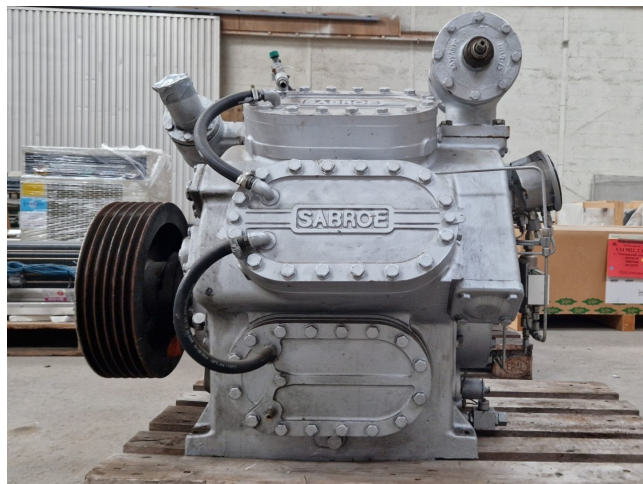


Sabroe SMC 108S HP

Specifications

Marca	Sabroe
Tipo	SMC 108S HP
Refrigerante	NH 3 (ammonia)
Refrigerant type	R717
kW at 0°C/+40°C	391,0*
kW at -10°C/+40°C	255,0* (-10 °C/+35 °C)
kW at -40°C/+40°C	71,0 (-40 °C/-10 °C)
Presostatos	✓
Manómetros de Presion	✓
La línea de líquido filtro secador	✓
Mirilla	✓
m3 / h	353
Comentarios	Y.o.b. 1991
Comentarios	*Capacity based on the refrigerant type R717 at 1500 RPM.
Peso kg.	1595 kg
Tamaños	1100x950x950 mm (LxWxH)
Stock	1



Description

Used Sabroe SMC 108S HP

Used Sabroe SMC 108S HP reciprocating compressor on NH3. Complete with a liquid line filter drier, pressure safety switches/gauges and sight glass. The compressor has a displacement of 353 m³/h at 1170 RPM. *Why choose for HOSBV? Were not only the largest used refrigeration specialist in Europe, but also, we deliver all equipment soley if it has passed our extensive quality test and after it has been cleaned industrially. *If requested we are happy to arrange your shipment.

